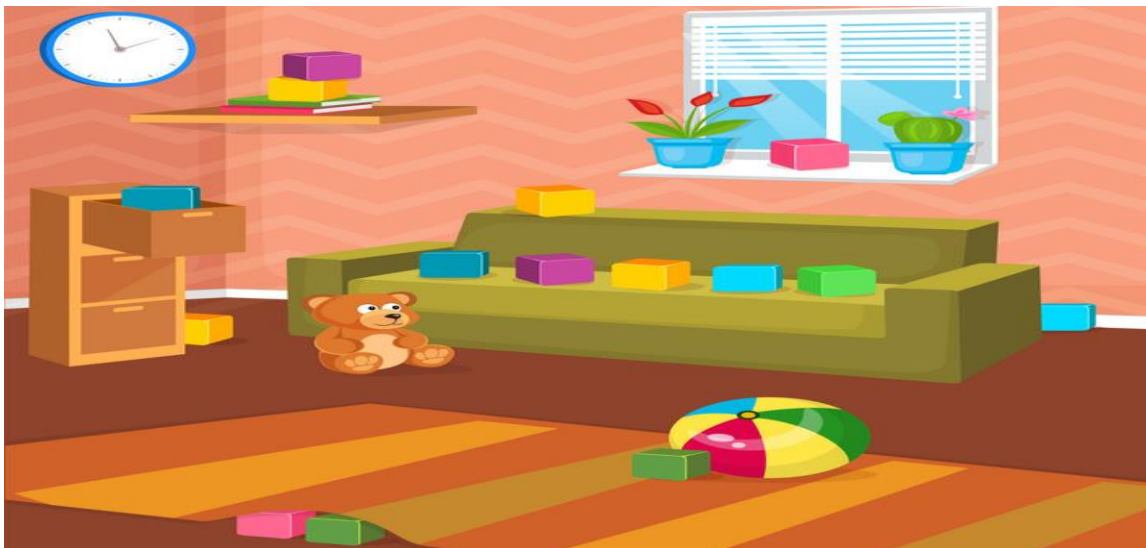


Preposition



A preposition is a word used before a noun or pronoun. It shows direction, time, place, location, spatial relationship, or to introduce an object.

Look at the picture and fill in the blanks with the correct preposition from the given box below.



on - under - between - in front of

1. The bear is _____ the sofa.
2. The clock is _____ the wall.
3. The two blocks are _____ the carpet.
4. The red block is _____ the two vases.